

S u r v e i l l a n c e a n d s e c u r i t y



Understanding the **technologies**



imotion
www.imotionsecurity.com



> Multi DVR

You also have the option to actively monitor your site from security stations equipped for online video monitoring. These centralized stations have a live view of all of the cameras. Operators can also warn intruders to leave the premises; failure to do so will prompt them to call the authorities through I-PHONE™ software. You can opt for MDVR™ to centralize all viewing via TCP/IP for all facilities. You can install three 32-inch LCD screens simultaneously displaying 64 cameras. Among these user-friendly components, an active viewing device can be programmed to make the system easier for security guards to use.

> Point of Sale (POS)

We offer a system that connects cash registers or POS systems by synchronizing the cash register's or the POS's transactions with the associated camera image. Also featuring a smart search mode, this system can help you significantly reduce theft during cash handling.



> Access Control

iMotion Security offers to integrate door access controls with the DVR, creating a coded correlation between a camera image and card access use. This results in better management of access cards, ensuring that cards are used only by authorized persons.

Access Control is an essential device that protects you from criminal acts and secures your assets. We will design with you a global security concept that meets your demands in terms of protecting sensitive areas.

> WiFi and WiMax Networks

After some tests are performed on site, we will establish transmission ROUTES between your digital video recorders (DVRs) to make them accessible via an Internal network using WIFI or WIMAX protocol antennas.



> Microphones and Loudspeakers

We offer the possibility to integrate microphones and loudspeakers into the video monitoring system, which allows two-way communication with any unauthorized individual entering indoor or outdoor facilities. This communication effectively shows intruders the strength of a facility's active monitoring system, dissuading them from remaining on the premises.



▶ PTZ Cameras and Smart Systems



iMotion Security can install PTZ systems able to automatically pan, tilt and zoom cameras, guided by automated patrols. Be advised: it is our opinion that having several simultaneous view planes is more effective than having just one. Even though a PTZ system has the ability to 'patrol', we have to remember that when a camera points to the right, it has no view to the left, and vice-versa. Because of this, we recommend the installation of several fixed cameras for the most vulnerable areas.

PTZ Smart Camera systems are ideal for monitoring areas without any human presence. These cameras follow and frame moving objects more efficiently giving the observer better shots and so yielding more useful visual information. Contact us to learn more about this smart system.

▶ Anti-vandal Infrared Dome Cameras

Infrared cameras are used in professional video monitoring situations when it is necessary to insure continual surveillance, even in pitch black. They are commonly called 'Day/Night' cameras. Unlike most cameras, they include infrared transmitters that guarantee a discernable image, even in unlit or poorly lit areas. With sufficient light, the camera's CCD sensor generates colour pictures. With insufficient light, the camera reverts back to black and white.

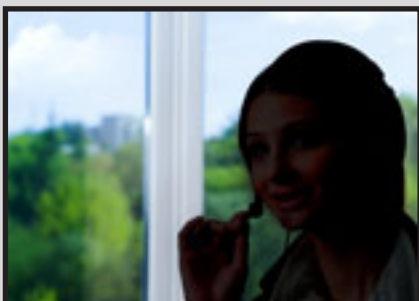


▶ WDR Camera - Wide Dynamic Range

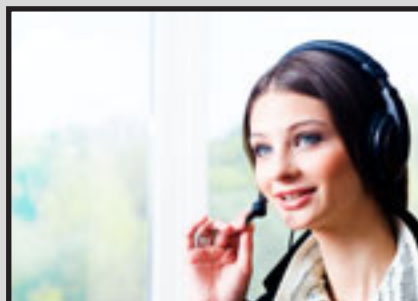
WDR (Wide Dynamic Range) is a dynamic broadband technology that alternates between two shutter speeds, fast and regular, within the same video field. This function captures every detail exactly, even if one part of the frame is bright while other sections are dark. Because of this the combined fields yield high quality images. Below, you can compare different camera technologies with standard exposure compensation, compensation for shots against daylight, and last, with wide dynamic range.



WDR provides excellent image quality in high contrast areas, guaranteeing clear images in both bright and dark areas.



Regular camera



Camera with
backlight compensation



WDR camera



> Carbon Monoxide Detector

Carbon monoxide (CO) is an extremely toxic gas released during fuel combustion. Because it is invisible and odourless, it is very hard for humans to detect. To protect yourself from possible poisoning, it is prudent to install a carbon monoxide detector.

The detector works through an electrochemical process: when in contact with CO, a chemical reaction provokes an electrical current that triggers an alarm. The first symptoms of carbon monoxide poisoning are headache and nausea.

> Motion Detector

A motion detector can be installed anywhere where it is not blocked. When an intruder's movement is sensed, the motion detector sends a coded signal to the security console which triggers an alarm if it is armed. If you have a telephone transmitter, it will relay the call to phone numbers that you have designated or to a central video monitoring station.



> Glass Break Detector

If an intruder breaks glass to enter the building, the sound of shattered glass can be sensed by this detector. The detector's effectiveness increases if the monitored windows are themselves equipped with magnetic contact sensors

This kind of device is used for situations that are not appropriate for motion detectors and where there are many windows that give way to the secured room. However in most cases, as noise does not stay at the same intensity as it bounces off the walls or it is too far away, you will need to install several glass break detectors to ensure their effectiveness.

> Alarm System Keypad

A command box activates or deactivates the alarm system. The status of the different monitored areas is reported by flashing lights on the keypad.

The keypad's Alert button, always at your disposal, immediately calls the Central Monitoring Station.



> Smoke Detector

A smoke detector is an electronic device that analyzes air at ceiling level. As soon as it detects smoke, it emits an audio alarm signal. Smoke detectors play a vital role in sounding the alarm when a fire is just starting. It is on guard 24 hours a day, and is especially useful at night time, when human vigilance is greatly reduced, if not absent. Night time fires are responsible for 70% of all home fire fatalities.

A smoke detector cannot stop a fire from happening, but it warns residents and gives them the necessary time to leave the premises or even to put out the fire if it is only just starting, considerably limiting ensuing damages and financial loss.



> Low Temperature Detector

A temperature detector is normally installed near the water main. As soon as the temperature goes below the pre-designated level (above freezing), a signal is sent to the Central Video Monitoring Station which in turn alerts one of the persons in charge so that they can get to the site, thereby limiting damages.

As damages caused by broken water pipes are often great and make a resident's home life quite unpleasant for long periods of time, investing a few dollars on this device will provide you with definite peace of mind!

> Door and Window Contacts

Contacts protect doors and windows against break-ins. If a door or window is opened while the system is armed, the alarm is triggered immediately.



> Fire Alarm Control Panel

Fire alarm control panels manage fire detection and extinction. Most panels manage two, four or eight areas, a maximum of four of which feature alarm sirens. Detection circuits support two levels of alarms, alert and evacuation, and can be used for different siren reactions.

> Propane/Natural Gas Detector

Installing a gas detector system saves lives and protects your home and belongings. These detectors are usually installed in the same room as the gas line entrance as well in places where there is a gas appliance.

Sensors are chosen according to the gas they detect (natural gas, propane, methane butane). They are connected to a central station that always checks the concentration of the gas in the room. Transmitting an alarm to our central video monitoring station means a fast and efficient response.



> Flood/Water detector

A water detection device gives a 24 hours a day warning of flooding, either by point detection, or by a sensitive cable system indicating the exact area of leakage.

Within an installation whose alarm signal is connected to our 24 hour central video monitoring station, the information will be relayed through a separate channel so it can be treated with the appropriate response.





> Sirens and Strobe Lights

iMotion Security can also offer you strategic warning systems. These can rapidly repel criminals by creating an automatic chain reaction, using strobe lights and alarm signals similar to those used in police vehicles.

> Camera Masts

Installation of camera masts remains the customer's responsibility, and this, through their own electrician. These masts will be installed at the required height in order to create a direct Point of Sight with the antenna that transmit data.

Electricity: power connections will be installed by your electrician and iMotion Security will convert the required current voltage to ensure the proper functioning of the installed equipment.



> SMART Sites

This proven cutting-edge technology allows us to control and view PTZ cameras through specific antennae. It gives you full control of PTZs. You will be able to remotely program automatic camera patrols all from one location. A video encoder/decoder allows for MULTICAST transmission, in real time, of high resolution video images and data on the TCP/IP network, in JPEG200 or MPEG4 wavelets.

> Radio Antenna Transmission Protocol

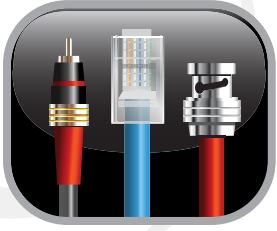
There are many radio frequencies on the market. It is therefore important to transmit an appropriate frequency on your site so as to not interfere with other technologies in place or with police or government radio frequencies, or those pertaining to essential services.



> Fibre Optics

For their capacity and speed, fibre optics is the most advanced data transmission technology available. This technology allows transparency between DVRs and most of all, the ability to transmit sight, data, video and all other applicable technology. It secures sensitive data at high speed, uses flux control to limit package losses and retransmissions. This results in a more efficient data transfer between the memory card and the switch. The absence of electric resistance makes fibre optics infrastructure particularly efficient against interference (transitory noise).





> **Category and Quality of Wires and Connectors**

In order to ensure that our installation meets the highest standards, iMotion Security uses exclusively, for the installation of its components, coaxial RG-6 cable with 95% jacketing and 2-strand 18-gauge insulated cable. These standards guarantee a clear, fluid image shielded from all magneto-induction and allows for camera installation up to 1,000 feet away.

> **Uninterrupted Power Supply (UPS)**

A UPS is an electrical power device that can deliver Alternating Current and tension from a continued electrical energy source. Using a UPS (battery back-up) is strongly advised to safeguard data and connection to the server when the current is interrupted. Both cameras and the server will continue to work for a short period of time until the current is re-established, ensuring continual monitoring.



> **Personal Digital Assistant (PDA) and Mobile Guard**

iMotion Security's server can send images to your hand-held computer (PDA) to provide wireless monitoring in real time. PDA VIEWER™ software allows security guards to move around while keeping a sharp eye on video monitored sensitive areas.

> **High Voltage Switch**

For customers who want to take advantage of the benefits of fibre optics, we suggest high voltage switches (24-port Hubs) for use of fibre optic cables connecting administrative facilities with facilities that are at a distance.



> **Trenches and Underground Cabling**

Unless otherwise indicated, the Customer (through the services of their electrician) is responsible for digging and installing underground transmission cabling located near trenches or buried pipes.



imotion
www.imotionsecurity.com

**Visit our
NEW
WEBSITE !**

for
useful tools

Toll Free: 1.866.519.0008 | Montreal: 514.337.0008 | Fax: 514.335.5408
1955, chemin de la Côte de Liesse, suite 109A, Saint-Laurent, QC H4N 3A8