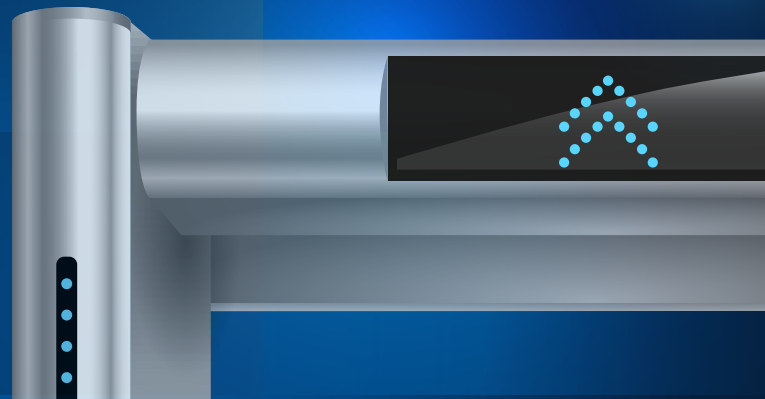


# ABRAXAS

## Product Description



## Seamless Access Using Your Face

Secure, accurate, and seamless access management based on state-of-the-art face recognition.

## Key Features



### FACE DETECTION

Detect and track each person approaching the gate



### WHITELIST

Manage Whitelists and assign POIs to them



### GROUPS

Create POI groups and define their label, color, and alert type



### ANTI-TAILGATING

Detect and alert tailgating in real-time or after the fact



### ANTI-SPOOF

Prevent spoofing attempts with IR liveness verification



### ALERT

Personalize alerts for non-authorized persons



### PLUG & PLAY INTEGRATION

Integrate easily with your existing access control system and hardware infrastructure



### EDGE

Manage multiple gates concurrently using low-cost edge computing

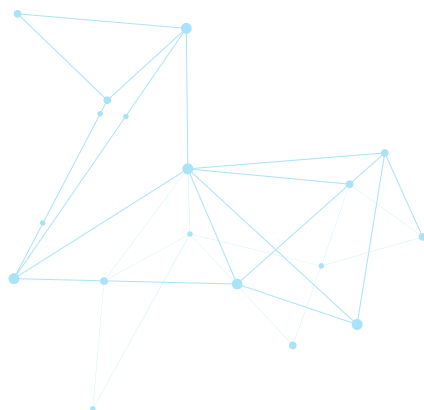


### MOBILE ENROLLMENT

Easily enroll new guests/visitors via mobile application

# Technical Specifications

SYSTEM COMPONENT		PERFORMANCE AND LIMITATIONS
<b>System</b>	Deployment	On premise
	Software/hardware	Software embedded on designated hardware
<b>Integration</b>	Camera	Camera agnostic Fully compatible with IR camera
	Access control	Integrate seamlessly into existing access control (see system architecture below) Capabilities: Synchronize DB, Submit POI ID, submit unknown individual ID
<b>Detection</b>	Capabilities	Face and body detection Robust 'In the Wild' detection, including any light condition, angle, ethnicity, age, major occlusion etc.
	Speed	0.43ms
	Minimal face size	45X45 Pixels
<b>Recognition</b>	Capabilities	Face and body recognition Robust 'In the Wild' recognition, including any light condition, angle, ethnicity, age, major occlusion etc. 1:1, 1:N, N:M
	Speed	0.2ms per 115M people in the database
	Accuracy	Up to 99.9%
	Database size	Up to 300M people
<b>Database</b>	Database size	Up to 300M people
<b>Storage</b>	Tracks	Save up to 300M Tracks in the system
	Video	According to client's operational need, determined by the hard-drive capacity

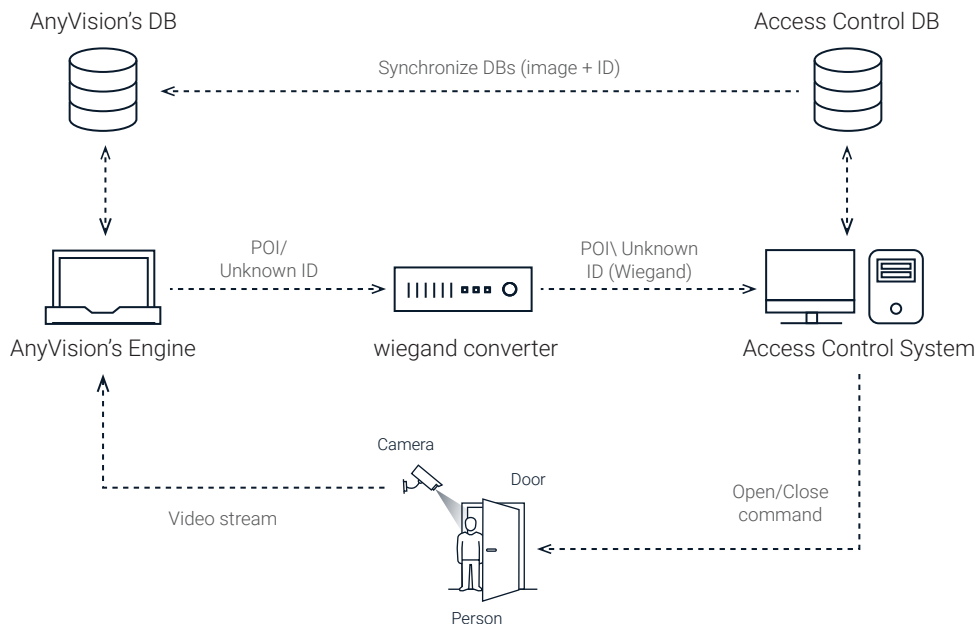


# Minimum System Requirements

COMPONENT	MINIMUM SUPPORTED
CPU	Celeron N3350
GPU	Not mandatory
Memory	2GB DDR4
Storage	32GB SSD
Operating System	Linux Ubuntu 16.04+/RedHat Enterprise Linux 7+
Additional software	Docker-CE18.03+ Docker compose 1.22

## Solution Data Flow

When a person is recognized at the gate by AnyVision's engine, their ID will be sent via Wiegand Gateway to the access control system. The access control system will enable/deny access according to its defined rules. When an unrecognized individual is detected, AnyVision's engine will send a default ID for unauthorized persons.



\* Wiegand is a standard serial protocol for access control communication, used by the vast majority of Access Control systems

# Access Control Integration

Integrate seamlessly with the leading Access Control systems



## Trusted By



## Hardware Specs

CASE	CPU	MEMORY	STORAGE	# STREAMS
NUC	Core i7-8559U	8GB RAM	128GB SSD	5 streams
NUC	Core i5-7300U	8GB RAM	128GB SSD	4 stream
NUC	Core i3-7100U	8GB RAM	128GB SSD	3 streams
UP Square	Celeron N3350	2GB RAM	32GB eMMC	1 stream

