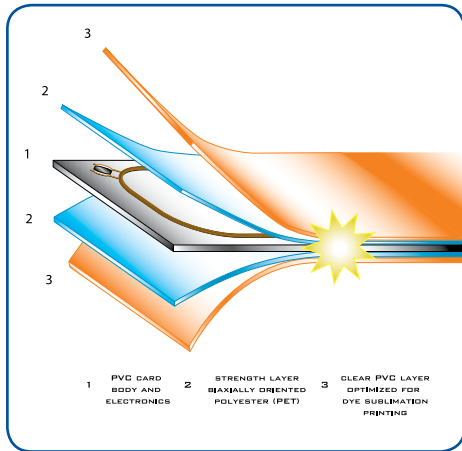


Indala FlexISO[®] XT Composite Card



- **Revolutionary Composite Materials** – Resists warping caused by high-temperature application of polyester overlays by many dye-sublimation printers.
- **Ideal for High Wear-and-Tear Environments** – Such as university or factory settings.
- **Lifetime Warranty** – Although you may never need to use it, cost-effective FlexISO[®] XT cards are backed for life.

Integrating HID Indala advanced FlexSecur[®] proximity technology within a card body, the FlexISO[®] XT is designed to withstand the most extreme applications. Unique composite formulation enhances the structural integrity of the card, providing additional protection of the core electronics. The FlexISO XT is particularly effective in applications that require magnetic stripe and/or barcode transactions.

The Indala FlexISO XT Card can be programmed in the factory or in the field using the Indala ProxSmith[®] Programmer and Toolkit with Wiegand, magnetic stripe and serial data formats. The FlexISO XT can be used interchangeably with other Indala credentials on most systems and can be ordered with specified facility codes and ID numbers.

Exclusive FlexSecur Security Technology

All HID Indala 125 kHz Proximity Cards feature FlexSecur technology which provides an added level of access system security through a verification process at the reader. A feature unique to the HID Indala product line, FlexSecur screens out unauthorized cards prior to sending card data to the host system.

This additional verification step enhances the security of your access system in two ways:

1. The entire card data field is encrypted prior to programming the card. Therefore, the data on the card cannot be decoded to determine the actual information on the card. Only the reader is able to decrypt the data and transmit it to the access control system.
2. Cards and readers can be programmed uniquely for each site, protecting the end user against unauthorized entry attempts by using cards from another facility. Again, this is unique to the HID Indala product line.

FEATURES:

- ISO 7810 Compliant.
- As with all Indala cards, the FlexISO XT is compatible with all Indala readers, and can be easily encoded with the Indala ProxSmith Programmer and Toolkit.
- The passive, no-battery design allows for an infinite number of reads, and is warranted for life against defects in materials and workmanship.
- PVC Card Surface Optimized for Dye Sublimation Printing. Biaxially Oriented Polyester (PET) Composite Card.
- Can be combined with a magnetic stripe, bar code, a multitude of smart chips, and MIFARE[®].



FEATURES:

- **Compatibility** - Works with HID Indala 125 kHz readers. It can also be used interchangeably with other Indala credentials.
- **High Security** - Utilizes Indala FlexSecur® technology; data encryption, 172 user definable bits, password protection, and security between card and reader.
- **Two Points of Authentication** - Works with HID Indala 125 kHz readers. It can also be used interchangeably with other Indala credentials.
- **Rugged and Durable Design Able to Withstand Harsh Environments** - The card has been able to withstand the Indala product 100k Card Bend Test without affecting the card's functionality.
- **Heat Resistant Cards*** - The printer-friendly card's front surface is compatible with both direct and re-transfer type dye-sublimation printers.
- **Customizable** - The surface can be customized with high quality, four-color graphics, anti-counterfeiting features (UV fluorescent ink, embedded and surface holograms, and microfine printing), and personalization (variable data images).
- **Expanded Credential Information** - Use the 172 bits to code employee's office location, grade level, department location, or any other pertinent credential information.
- **Convenient Card Re-Issuance** - FlexISO® XT cards are backwards compatible with all Indala 125 kHz Proximity readers, allowing any number of cards to be easily re-issued, as necessary.

SPECIFICATIONS



FlexISO® XT Card

| | | | | |
|-------------------------------------|--|------------------|-------------------|-------------------|
| Standard Part Number | FPIXT-SSSCNA-0000 | | | |
| Description | 125 kHz, white glossy finish (front), white glossy finish with Indala logo (back), inkjet marking on standard location, no slot punch, no magstripe, no artwork. | | | |
| Dimensions | 3.38"H x 2.12"W x 0.03"T (86 mm x 54 mm x .76 mm) nominal | | | |
| Weight | 0.20 oz (6 g) | | | |
| Module | Slim/Wallswitch | Classic | Mid-Range | Long Range |
| Typical Maximum Read Range** | Up to 4" (10 cm) | Up to 5" (12 cm) | Up to 12" (30 cm) | Up to 26" (66 cm) |
| Cover Design | Linear/Arch/ Curve/Wave | Linear | Arch/Wave | Arch |
| Operating Temperature | -22° to 158° F (-30° to 70° C) | | | |
| Inkjet Marking | Includes sales order number and ID number matching internal ID | | | |
| Custom Graphics | Available on front and back with customer-supplied artwork | | | |
| Slot Punch | Optional vertical or horizontal (locations indicated on card) | | | |
| Coding | Wiegand, ABA Track II Magnetic Stripe, others available (exact coding standard, with no gaps or over-runs) | | | |
| Programming | Factory or field programmable via Indala ProxSmith® Programmer and Toolkit | | | |
| Warranty | Lifetime | | | |

ASSA ABLOY

An ASSA ABLOY Group brand

© 2012 HID Global Corporation. All rights reserved. HID, the HID logo and Secure Identity Object are trademarks or registered trademarks of HID Global in the U.S. and/or other countries. All other trademarks, service marks, and product or service names are trademarks or registered trademarks of their respective owners.
2012-06-11-indala-flexiso-card-ds-en

North America: +1 949 732 2000
Toll Free: 1 800 237 7769
Europe, Middle East, Africa: +49 6123 791 0
Asia Pacific: +852 3160 9800
Latin America: +52 55 5081 1650

hidglobal.com

* When customizing cards using Re-Transfer Printers that fuse images to the surface of the card by applying heat and pressure (such as the Fargo HDP5000) we recommend the use of composite cards, which are better able to withstand the higher application temperatures.
**Dependent on local installation conditions.