

# SNC-CH180

Network HD Bullet Camera — V Series

**SONY**  
make.believe

## Outdoor IP66 720p HD Security Camera with IR Illuminator and 130 dB Wide Dynamic Range Technology

- Excellent 720p HD picture quality, supporting H.264 at 30 fps
- 1.3 Megapixel (1280 x 1024) maximum resolution
- Three codecs (H.264, MPEG-4, JPEG) and a dual streaming capability
- Exmor™ CMOS sensor incorporated to deliver high image quality and low noise
- Wide dynamic range capability of 130 dB with View-DR™ technology

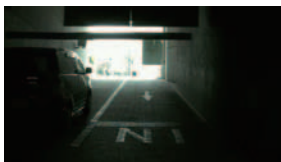


**HD**

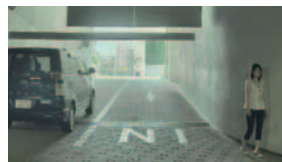
### Key Features

- View-DR™ technology—Sony's innovative Wide Dynamic Range technology—to capture objects clearly and adaptively even under very severe backlight or highlight conditions.

**View-DR**



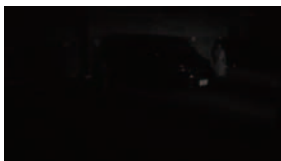
OFF



ON

(Actual Images)

- Visibility Enhancer to optimize the brightness and color reproduction of an image dynamically on a pixel-by-pixel basis while continuously adapting to the scene, within the given dynamic range.
- Built-in IR (Infrared) illuminators to assist capturing objects in the dark even under 0 lx, up to 98 feet (30 m) (50 IRE) away. Adaptive IR auto adjusts IR level for best picture.



OFF



ON

(Actual Images)

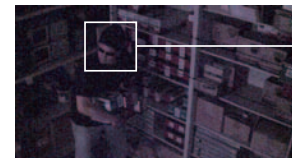
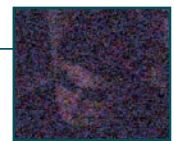
- IP66-rated water-resistant and dust-tight feature for outdoor surveillance, or indoor where water ingress may pose an issue.
- Easy Focus/Easy Zoom functions to remotely change the field of view and focus.
- DEPA™ Advanced Intelligent Video and Audio Analytics to trigger an alarm, based on user-defined rules.
- Equipped with CompactFlash® slot for on-board recording\* and wireless operation capability with the optional SNCA-CF5 802.11g card.



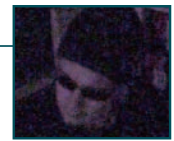
- True Day/Night function to switch to Day or Night mode depending on the light level.
- XDNR™ (eXcellent Dynamic Noise Reduction) technology for clear images without motion blur under low illumination.



OFF



ON



(Actual Images)

- Powered by either AC 24V, DC 12V, or PoE (Power over Ethernet) for easy installation.
- Equipped with a built-in heater for continued camera operation in cold weather -22°F to +122°F (-30°C to +50°C).
- Equipped with a BNC connector and a phono jack to instantly monitor the video while installing the camera.
- ONVIF™ (Open Network Video Interface Forum) software that ensures greater interoperability and more flexibility in building multiple-vendor systems.

**ONVIF**

\* Data recorded on a CF memory card may be lost or damaged by data access during power-off, mechanical shock, memory card detachment, or other operations. Data loss or damage can also occur when a memory card reaches end of life, which varies according to operational conditions. No guarantee is given against damage (including passive damage).

**IPELA™**

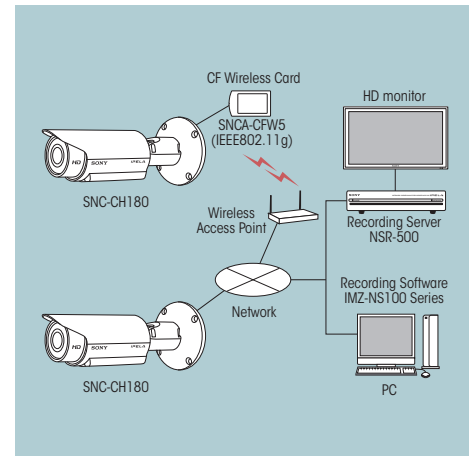
## SPECIFICATIONS

SNC-CH180	
<b>Camera</b>	
Image device	1/3 type progressive scan Exmor CMOS sensor
Minimum illumination	Color: 0.22 lx, B/W: 0 lx - IR ON (F1.2/View-DR OFF/XDNR ON-Middle/VE OFF/AGC High/50 IRE [IP])
Number of effective pixels (H x V)	1.4 Megapixel (1329 x 1049)
Electronic shutter speed	1s to 1/10000s
Gain control	Auto (3 levels)
Exposure control	Auto, EV Compensation *1, Auto Slow Shutter *2
White balance mode	Auto (ATW, ATW-PRO), Preset, One-push WB, Manual
Lens type	Built-in Vari-focal lens
Zoom ratio	Optical 2.9X (x2 Digital Zoom)
Horizontal viewing angle	85.4 to 31.2 degrees
Focal length	f=3.1 to 8.9mm
F-number	F1.2 (Wide), F2.1 (Tele)
Minimum object distance	300 mm
Powered focus	Yes (Easy Focus)
Powered zoom	Yes (Easy Zoom)
IR illuminators	Yes (Wave Length: 850nm [Typical], IR LED: 27pcs)
IR working distance	98 feet (30 m) (50 IRE)
<b>Camera Features</b>	
Day/Night *3	Yes (True D/N)
Wide-D	View-DR technology (130dB)
Image enhancement	Visibility Enhancer
Noise reduction	XDNR technology
<b>Image</b>	
Codec image size (H x V)	1280 x 1024, 1280 x 960, 1280 x 800, 1280 x 720, 1024 x 768, 1024 x 576, 800 x 480, 768 x 576, 720 x 576, 720 x 480, 704 x 576, 640 x 480, 640 x 368, 384 x 288, 320 x 240, 320 x 192 (H.264, MPEG-4, JPEG)
Video compression format	H.264, MPEG-4, JPEG
Codec streaming capability	Dual streaming
Maximum frame rate	H.264: 20fps (1280 x 1024) / 30 fps (1280 x 720) MPEG-4: 25fps (1280 x 1024) / 30 fps (1280 x 720) JPEG: 30fps (1280 x 1024) / 30 fps (1280 x 720)
<b>Audio</b>	
Audio compression	G.711/G.726
<b>Scene Analytics</b>	
Intelligent motion detection	Yes (with built-in Post Filter)
Intelligent object detection	No
Rule filter	Yes
<b>Network</b>	
Protocols	IPv4, IPv6, TCP, UDP, ARP, ICMP, IGMP, HTTP, HTTPS, FTP (client/server), SMTP, DHCP, DNS, NTP, RTP/RTCP, RTSP, SNMP (MIB-2)
ONVIF software	Yes
Wireless network	Yes (with Option **)
Number of clients	10
Authentication	IEEE802.1X
<b>Analog Video Output</b>	
Signal system	NTSC
Horizontal resolution	600 TV lines
S/N ratio	More than 50dB
<b>Interface</b>	
Ethernet	10BASE-T / 100BASE-TX (RJ-45)
Serial interface	No
Card slots	CF card x1
Analog video output	BNC x 1
Analog monitor output	Phono jack x 1
Sensor input	x 1
Alarm output	x 2
External microphone input	Mini-jack (Monaural), MIC IN/LINE IN: 2.5VDC plug-in power
Audio line output	Mini-jack (Monaural), Max output level: 1 Vrms
<b>General</b>	
Weight	4 lb 3 oz (1.9 kg)
Dimensions	ø 3 3/4 x 7 3/8 inches (93 x 186 mm)
Power requirements	PoE *5, AC24V, DC12V
Power consumption	30 W Max.
Starting temperature	AC24V/DC12V: -4 to +122°F (-20 to +50 °C) PoE (IEEE802.3af): 32 to 122°F (0 to 50 °C)
Working temperature	AC24V/DC12V: -22 to +122°F (-30 to +50 °C) PoE (IEEE802.3af): 23 to 122°F (-10 to +50 °C)
Storage temperature	-4 to +140°F (-20 to +60 °C)
Ingress protection	IP66
Safety Regulation	UL2044, FCC 15B Class A, IC Class A, IEC60950-1, EN55022(A)+EN55024+EN50130-4, VCCI Class A, C-Tick Class A
<b>System Requirements</b>	
Operating system	Windows XP®, Windows Vista®, Windows® 7
Processor	Intel Core2 Duo® 2 GHz or higher
Memory	1 GB or more
Web browser	Microsoft Internet Explorer® Ver 6.0, 7.0, 8.0 or 9.0
<b>Supplied Accessories</b>	
	CD-ROM (User's Guide, SNC Toolkit) Installation manual Wire rope M4 screw B&P Warranty Booklet Template

\*1 VE off mode only, \*2 View-DR off mode only, \*3 Removable IR Cut Filter, \*4 With optional SNCA-CFW5.  
\*5 When used with PoE, SNC-CH180 cannot be used with a heater and a CF card slot.

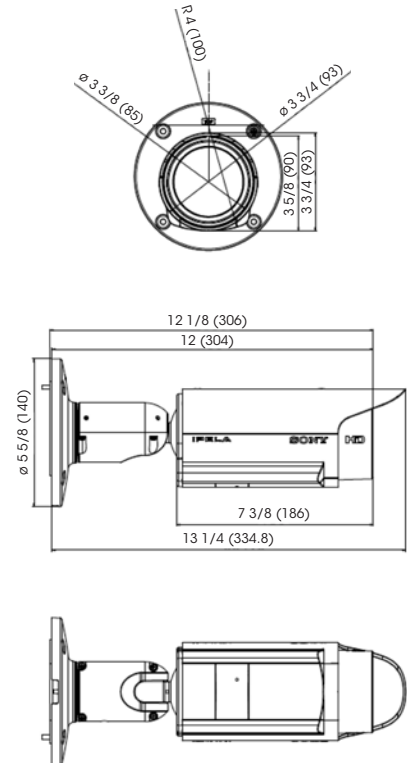
The SNC-CH180 includes software developed by the OpenSSL Project for use in the OpenSSL Toolkit (<http://www.openssl.org/>).

## SYSTEM CONFIGURATION



## DIMENSIONS

Unit: inches (mm)



Optional Accessory	
Model	
UNI-BBB1	Optional Conduit Box / Pole Mount