

## 254 SERIES

EXTRA-LARGE STAINLESS STEEL CAMERA HOUSING

SAFE AREA

- EXTRA-LARGE CAMERA HOUSING
- SUITABLE FOR BIG CAMERAS/LENSES
- AISI316L STAINLESS STEEL CONSTRUCTION
- FOR USE IN HIGHLY CORROSIVE ENVIRONMENTS
- INTEGRATED WIPER AVAILABLE
- WEATHERPROOF STANDARD IP66/IP67
- SUITABLE FOR ANALOG AND IP CAMERAS
- VISIBLE DAY/NIGHT AND THERMAL VERSIONS AVAILABLE



### TECHNICAL SPECIFICATIONS

#### GENERAL & MECHANICAL

<b>Dimensions</b>	See drawings next page	
<b>Operating Temperature</b>	-40°C +60°C, +75°C peak (-40°F +140°F, +167°F peak)	
<b>Window</b>	Optical glass Ø200mm (visible), Germanium Ø155mm (thermal)	
<b>Construction</b>	AISI316L Stainless Steel	
<b>Finish</b>	Electro-polished	
<b>Mounting</b>	See drawings next page	
<b>Cable entries</b>	4 M20x1,5 nickel plated brass cable glands (included) Standard cable diameter 5-10mm	
<b>Wiper</b>	Available	
<b>Weight</b>		
<b>Model</b>	<b>Unit [kg]</b>	<b>Package [kg]</b>
254SH-L/254SHIR-L	27	32
254WW-L	28	33

#### ELECTRICAL

<b>Thermostatically controlled heater</b>	<b>T[°C] ON</b> = 12 ± 4°C, <b>T[°C] OFF</b> = 20 ± 3°C
<b>Available voltages</b>	24VAC/DC, 230VAC (+/-10%)
<b>Power consumption</b>	10W
<b>Max Power consumption</b>	35W

#### CERTIFICATIONS

<b>Ingress Protection (EN 60529)</b>	IP66/IP67
<b>EMC</b>	EN 50130-4; EN/IEC 61000-6-2; EN/IEC 61000-6-4
<b>LVD</b>	EN 60950-1; EN 60950-22
<b>RoHS</b>	2011/65/EU + 2015/863/EU (RoHS 3)
<b>WEEE</b>	2012/19/EU

#### MODELS

<b>254SH-L/24<sup>1</sup></b>	Fixed camera housing, LONG size, with sunshield and 24VAC/DC heater
<b>254SH-L/230<sup>1</sup></b>	Fixed camera housing, LONG size, with sunshield and 230VAC heater
<b>254WW-L/24D<sup>1</sup></b>	Fixed camera housing, LONG size, with sunshield, heater and wiper, 24VDC
<b>254SHIR155-L/24<sup>3</sup></b>	Fixed camera housing, LONG size, with sunshield and 24VAC/DC heater. Germanium window Ø: 155mm
<b>254SHIR155-L/230<sup>3</sup></b>	Fixed camera housing, LONG size, with sunshield and 230VAC heater. Germanium window Ø: 155mm

<sup>1</sup> Usable front window diameter: 200 mm, thickness: 5 mm

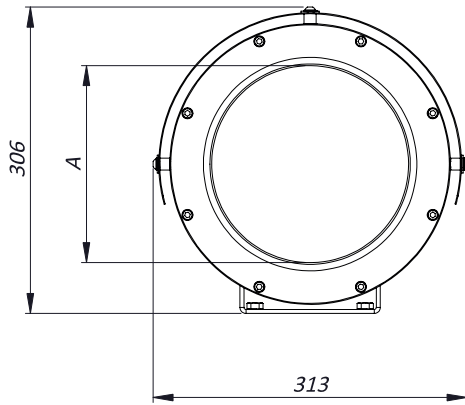
<sup>3</sup> Usable front window diameter: 155 mm, thickness: 5 mm. Germanium, AR/DLC coating

#### ACCESSORIES

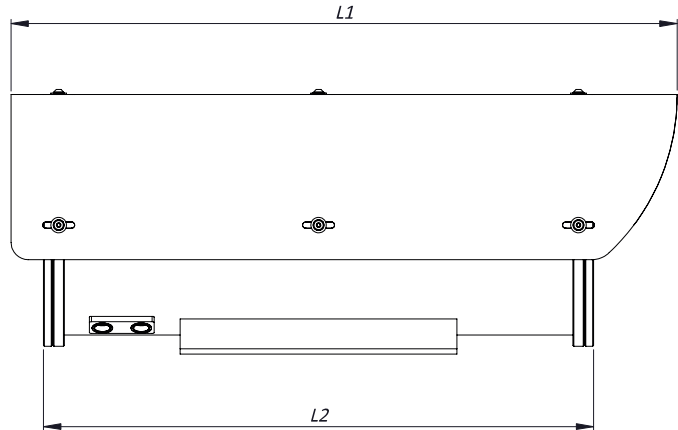
<b>SSBK-XL</b>	Wall mounting bracket
<b>SSPM-M</b>	Pole mount adapter for SSBK-XL
<b>RX24IO/24D</b>	Telemetry receiver for wash/wipe models, RS485, PELCO D protocol. 12VDC, 1A output for camera supply. Operating voltage: 24VDC
<b>PSU01</b>	Power supply 230VAC/24VAC installed inside the housing.
<b>PSU02</b>	Power supply 115-230VAC/12VDC installed inside the housing.

## DIMENSIONS

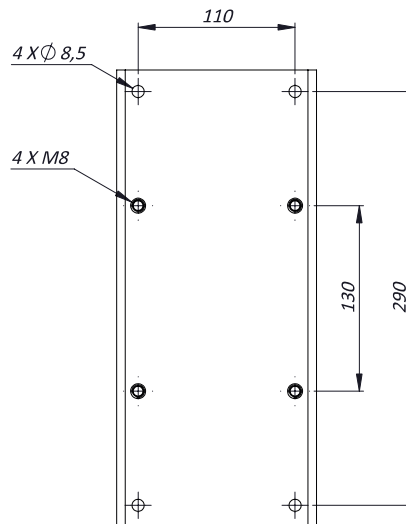
FRONT VIEW



SIDE VIEW



MOUNTING PATTERN



FOR "A" VALUES CHECK "MODELS" SECTION

### MAX EXTERNAL LENGTH

Model	L1 [mm]	L2 [mm]
254SH-L/254HIR-L	870	736
254WW-L	805	736

### MAX INTERNAL USABLE AREA

Model	Max internal dimensions [mm]	Max usable internal diameter [mm]
254SH-L/254HIR-L	176x174x545	211
254WW-L	176x174x545	191