

# TECNOVIDEO

CCTV SYSTEMS AND ACCESSORIES

## VSPT250HD-CR SERIES

HEAVY DUTY STAINLESS STEEL PAN & TILT

SAFE AREA

- HEAVY DUTY PAN & TILT
- AISI316L STAINLESS STEEL CONSTRUCTION
- 360° CONTINUOUS ROTATION
- MAXIMUM LOAD 50KG
- SUITABLE FOR THIRD PARTY CAMERA HOUSINGS
- FOR ANALOG/IP CAMERAS
- PRESET POSITIONING



### TECHNICAL SPECIFICATIONS

#### GENERAL & MECHANICAL

|                              |                                                     |
|------------------------------|-----------------------------------------------------|
| <b>Dimensions</b>            | See drawings next page                              |
| <b>Operating Temperature</b> | -40°C +60°C, peak +75°C (-40°F +140°F, +167°F peak) |
| <b>Construction</b>          | AISI316L Stainless Steel                            |
| <b>Finish</b>                | Electro-polished                                    |
| <b>Mounting</b>              | 4x Ø11 on 220 PCD                                   |
| <b>Cable entries</b>         | 2 M25x1,5 cable entry                               |
| <b>Pan Angle</b>             | 360° Continuous Rotation                            |
| <b>Pan Speed</b>             | Variable 0 – 10°/s                                  |
| <b>Pan Torque</b>            | 80 Nm (limited with safety device)                  |
| <b>Tilt Angle</b>            | 180° (+/-90°)                                       |
| <b>Tilt Speed</b>            | Variable 0 – 4°/s                                   |
| <b>Tilt Torque</b>           | 80 Nm (limited with safety device)                  |
| <b>Rotation angle</b>        | Electronically adjustable                           |
| <b>Backlash</b>              | <0,1°                                               |
| <b>Max preset accuracy</b>   | 0.01°                                               |
| <b>Control protocol</b>      | Pelco D (via RS485)                                 |
| <b>Weight</b>                | Unit: 47 Kg -/ Gross weight: 50 kg                  |

#### ELECTRICAL

|                              |                        |
|------------------------------|------------------------|
| <b>Supply voltage</b>        | 24VAC, 230VAC (+/-10%) |
| <b>Max power consumption</b> | 120W                   |

#### CERTIFICATIONS

|                                      |                                                             |
|--------------------------------------|-------------------------------------------------------------|
| <b>Ingress Protection (EN 60529)</b> | IP66/IP67                                                   |
| <b>EMC</b>                           | EN 50130-4; EN 55035; EN/IEC 61000-6-2;<br>EN/IEC 61000-6-4 |
| <b>LVD</b>                           | EN60950-1; EN60950-22                                       |
| <b>RoHS</b>                          | 2011/65/EU + 2015/863/EU (RoHS 3)                           |
| <b>WEEE</b>                          | 2012/19/EU                                                  |

#### MODELS

|                         |                             |
|-------------------------|-----------------------------|
| <b>VSPT250HD-CR/24</b>  | HEAVY DUTY P&T unit, 24VAC  |
| <b>VSPT250HD-CR/230</b> | HEAVY DUTY P&T unit, 230VAC |

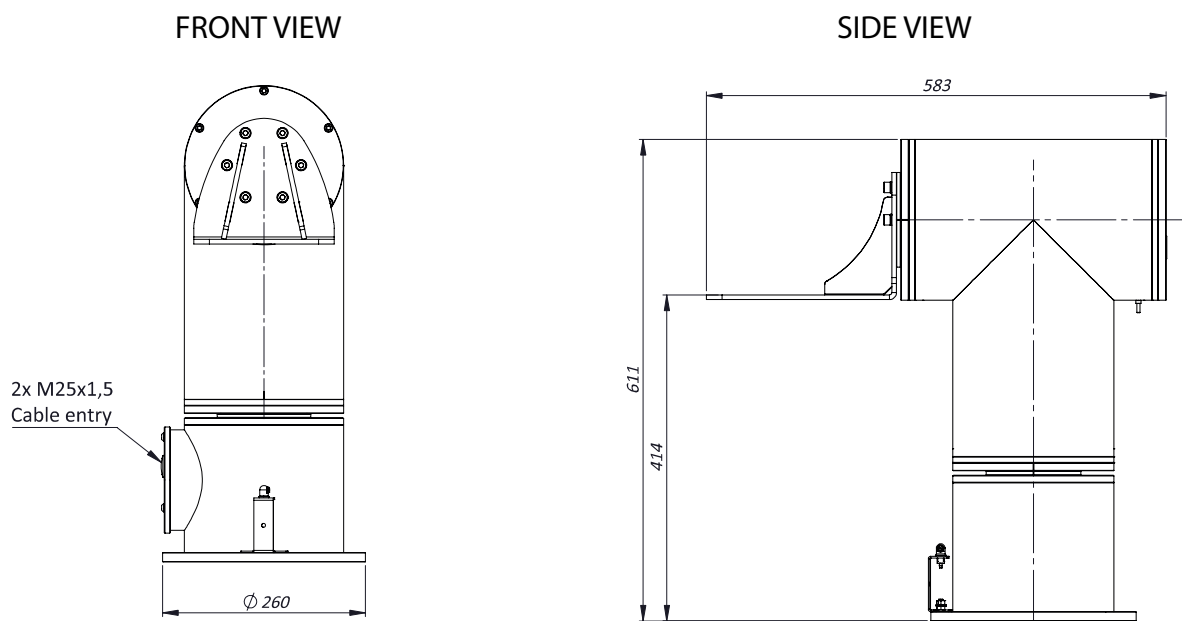
Available upon request: Built-in Single Mode Fiber Optic media converter.

#### PRE-ASSEMBLED CABLE TAILS

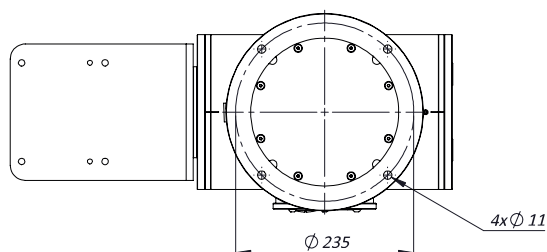
|                   |                                                                                                                |
|-------------------|----------------------------------------------------------------------------------------------------------------|
| <b>SAUCCT3-A</b>  | 3 meters composite cable tail (power, CAT6A, data) with two M20 nickel-plated brass glands. For fixed camera.  |
| <b>SAUCCT3-B</b>  | 3 meters composite cable tail (power, CAT6A, data) with two M25 nickel-plated brass glands. For PTZ camera.    |
| <b>SAUCCT5-A</b>  | 5 meters composite cable tail (power, CAT6A, data) with two M20 nickel-plated brass glands. For fixed camera.  |
| <b>SAUCCT5-B</b>  | 5 meters composite cable tail (power, CAT6A, data) with two M25 nickel-plated brass glands. For PTZ camera.    |
| <b>SAUCCT10-A</b> | 10 meters composite cable tail (power, CAT6A, data) with two M20 nickel-plated brass glands. For fixed camera. |
| <b>SAUCCT10-B</b> | 10 meters composite cable tail (power, CAT6A, data) with two M25 nickel-plated brass glands. For PTZ camera.   |

## HEAVY DUTY STAINLESS STEEL PAN & TILT

### DIMENSIONS



### MOUNTING PATTERN



*The unit cannot be installed upside-down nor horizontally*